



**BAL29**  
(AS1530.8.1-2007)

## **NRG 75 DFF** **NRG GREENBOARD™ WALL SYSTEM**

**NRG Energy Efficient Building Systems** is pleased to announce a revolution in lightweight cladding systems. NRG Building Systems is the first and only company to achieve **CodeMark™ Accreditation** and **BAL29** Fire Testing on EPS cladding systems.

**NRG Greenboard™ Wall System** has **CodeMark™** and **BAL29 Accreditation** on the complete system, comprising of NRG Greenboard™, fixings, render beads, polymer modified render, reinforced mesh, textures and membrane coatings. **NRG** is the only company to achieve **CodeMark™ Accreditation** making the system fully **BCA** compliant. NRG Greenboard™ has legislated product acceptance nationwide, giving the consumer total piece of mind and confidence.

**NRG Greenboard™** has passed extensive fire testing procedures (in accordance with **AS1530.8.1-2007**), by global testing company Exova Warringtonfire, that enables **NRG Greenboard™** to comply in **BAL29** areas (Bush Fire Attack Level).

Insurance companies are now insisting that EPS cladding systems have **BAL Rating** and **CodeMark™ Accreditation**. Why risk a product that insurance companies will reject. Once again **NRG Greenboard™** gives the designer, certifier, builder and customer total confidence and piece of mind.

For further enquires, please contact NRG on the details below.

p. 07 5535 3111 f. 07 5535 3222  
e. [sales@nrggreenboard.com](mailto:sales@nrggreenboard.com)  
w. [www.nrggreenboard.com](http://www.nrggreenboard.com)

PO Box 2405, Burleigh MDC QLD 4220  
Factory 4, 32-38 Dover Drive, West Burleigh QLD 4220

## **NRG 75 DFF** **SPECIFIED COMPONENTS FOR BAL AREAS**

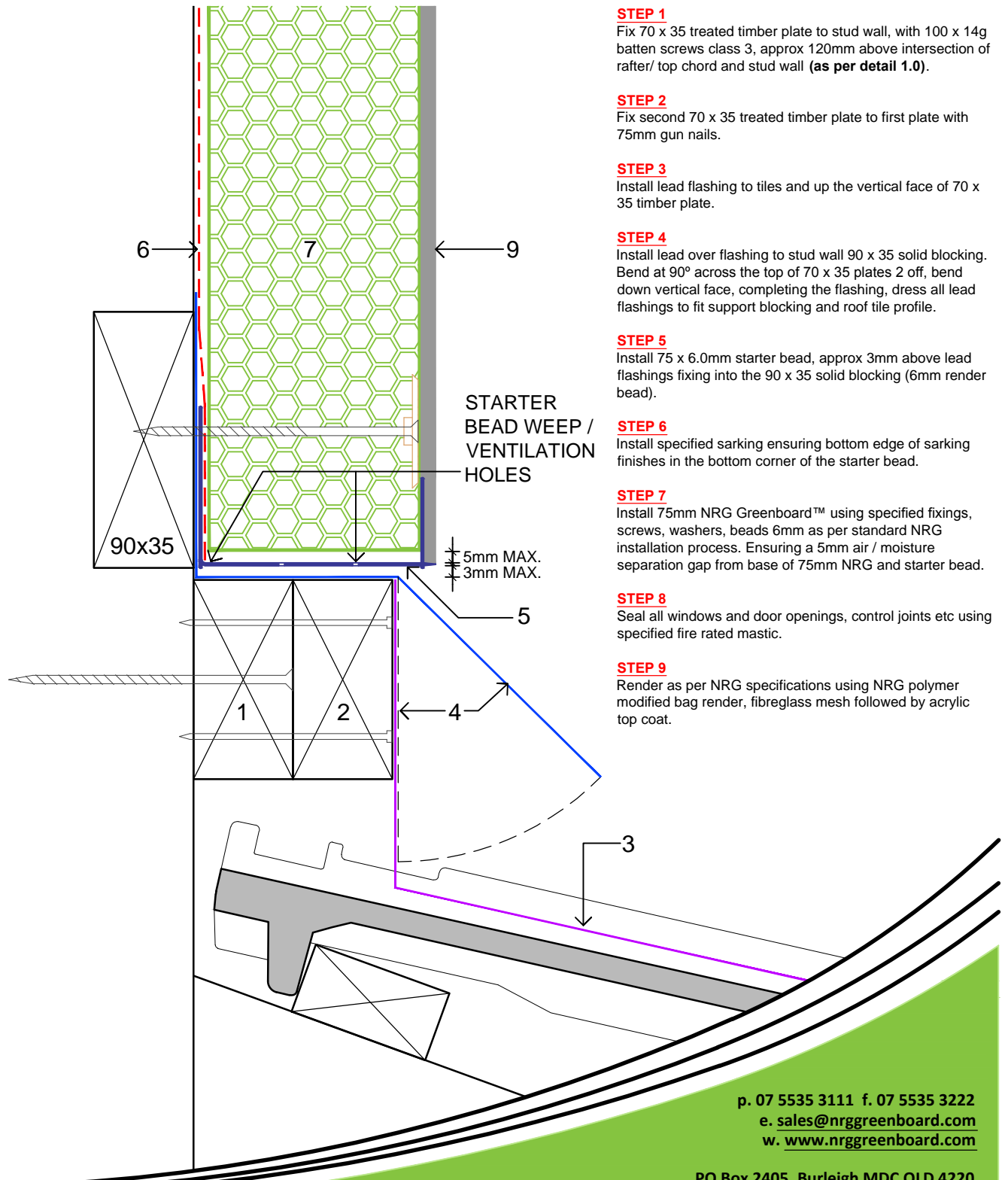
- 1/ 75mm NRG Greenboard™ 2480 x 1200
- 2/ NRG 100mm x 10 Gauge Screws
- 3/ NRG Greenboard™ 40mm Washers
- 4/ Sisalation: Non Combustible AS1530.2 Wall Wrap (Breather)
- 5/ NRG PVC 6mm Render Bead System
- 6/ Bostik No More Nails
- 7/ Bostik Fireban One Sealant
- 8/ NRG Polymer Modified Render or Rockcote PM100 (6mm)
- 9/ NRG Sand Medium or Rockcote Sandcote (1mm) Tinted Texture  
(OPTIONAL)
- 10/ NRG Shieldcoat or Rockcote Armour Flex (2 coats)

**NOTE: For BAL certification these components must not be altered.**

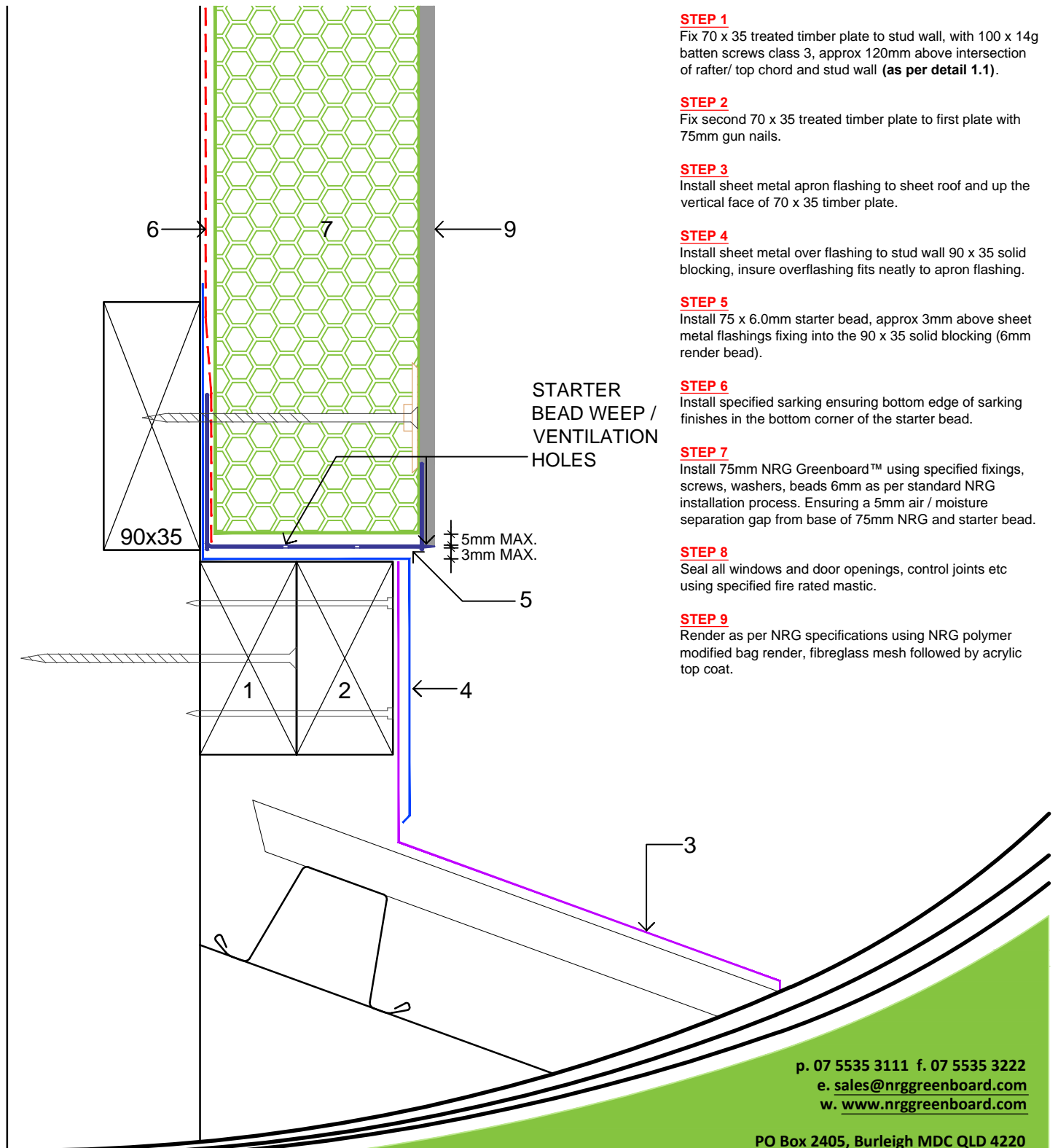
## NRG 75 DFF ESSENTIAL TRADE RELATED PRACTICES

- Overall **NRG 75 DFF** Thickness 81 mm
- Slab Rebate Dimensions
- Termite Management System in Rebate
- Window/ Door Reveal Width
- First Floor, Subfloor Framing Setback
- Fascia (zero eave) Dimension Setout, Frame to Fascia 81 mm
- Double 70 x 35 Pole Plate Over Lower Roof Areas as per **Detail 1.0 and 1.1**
- 2 Piece Sheet Metal Apron Flashing **as per Detail 1.1**
- 2 Piece Lead Flashing Over Tiled Roof Lines. (Note: Solid 90 x 35 blocking to frame as lead flashing vertical support **as per Detail 1.0**)
- Additional Solid Blocking for Fixing Downpipes, Hose Reels, Taps, Lightfittings, Air Conditioning Units etc.
- Installation of Non Combustible Sarking to Manufacturers Specification and Over Laps
- See Details 1.0, 1.1 and 2.0** Section Details with Sequential step x Step Guide for **NRG 75 DFF** BAL29.

## NRG 75 DFF OVER TILE ROOF LINE DETAIL 1.0



## NRG 75 DFF OVER SHEET METAL ROOF LINE DETAIL 1.1



**STEP 1**

Fix 70 x 35 treated timber plate to stud wall, with 100 x 14g batten screws class 3, approx 120mm above intersection of rafter/ top chord and stud wall (as per detail 1.1).

**STEP 2**

Fix second 70 x 35 treated timber plate to first plate with 75mm gun nails.

**STEP 3**

Install sheet metal apron flashing to sheet roof and up the vertical face of 70 x 35 timber plate.

**STEP 4**

Install sheet metal over flashing to stud wall 90 x 35 solid blocking, insure overflashing fits neatly to apron flashing.

**STEP 5**

Install 75 x 6.0mm starter bead, approx 3mm above sheet metal flashings fixing into the 90 x 35 solid blocking (6mm render bead).

**STEP 6**

Install specified sarking ensuring bottom edge of sarking finishes in the bottom corner of the starter bead.

**STEP 7**

Install 75mm NRG Greenboard™ using specified fixings, screws, washers, beads 6mm as per standard NRG installation process. Ensuring a 5mm air / moisture separation gap from base of 75mm NRG and starter bead.

**STEP 8**

Seal all windows and door openings, control joints etc using specified fire rated mastic.

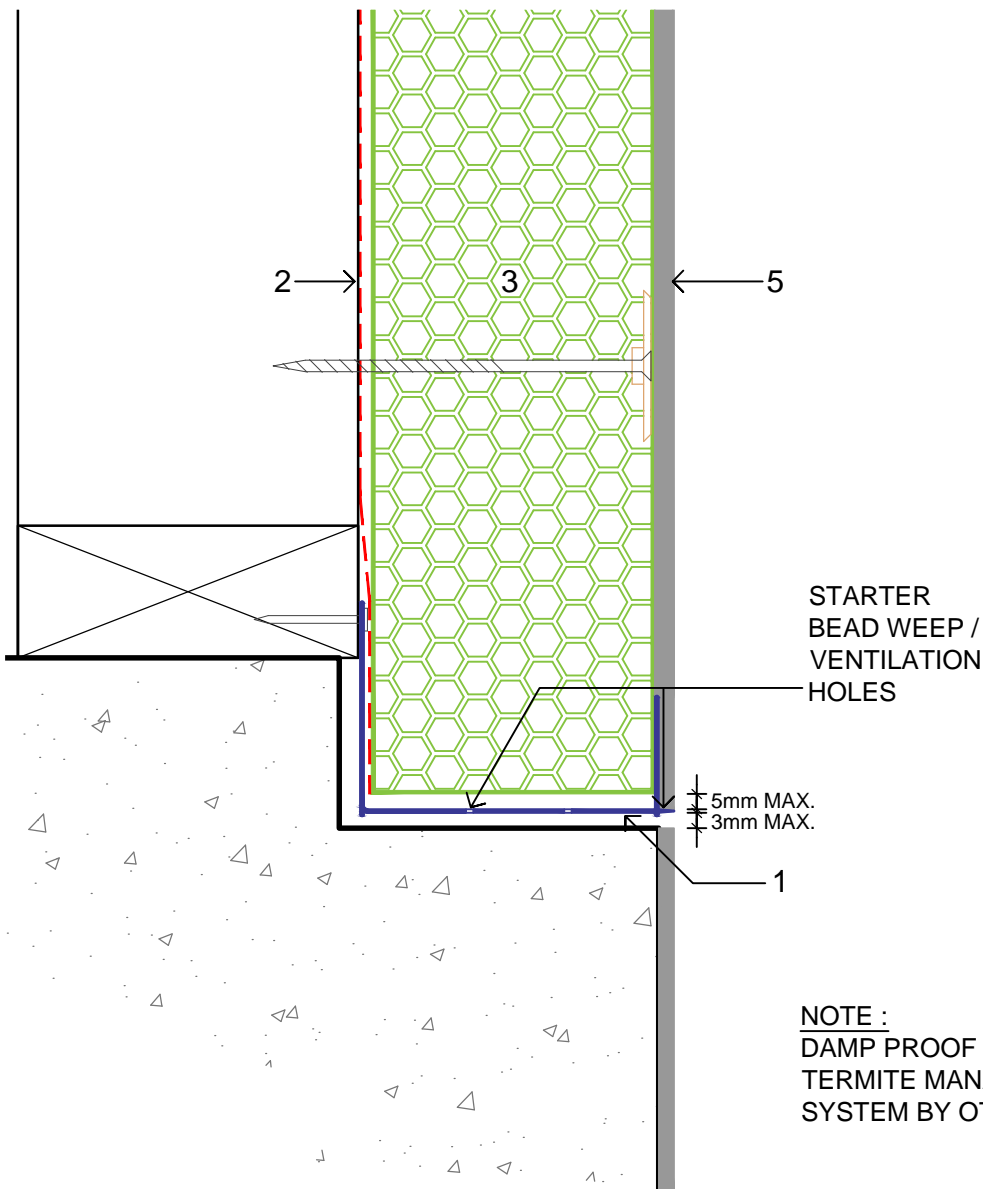
**STEP 9**

Render as per NRG specifications using NRG polymer modified bag render, fibreglass mesh followed by acrylic top coat.

STARTER  
 BEAD WEEP /  
 VENTILATION  
 HOLES

5mm MAX.  
 3mm MAX.

**NRG 75 DFF**  
**SLAB EDGE DETAIL**  
**DETAIL 2.0**



**STEP 1**

Install 75mm starter 6mm bead, 3.0mm to 5.0mm above rebated slab edge, fix back of bead to bottom plate using 30mm galvanised clouts (as per detail 2.0).

**STEP 2**

Install specified sarking, ensuring bottom edge of sarking finishes in the bottom corner of starter bead.

**STEP 3**

Install 75mm NRG Greenboard™ using specified fixing screws, washers, 6mm beads as per standard NRG installation process. Ensuring a 5mm air / moisture separation gap from base of 75mm NRG and starter bead.

**STEP 4**

Seal all windows and door openings, control joints etc, using specified fire rated mastic.

**STEP 5**

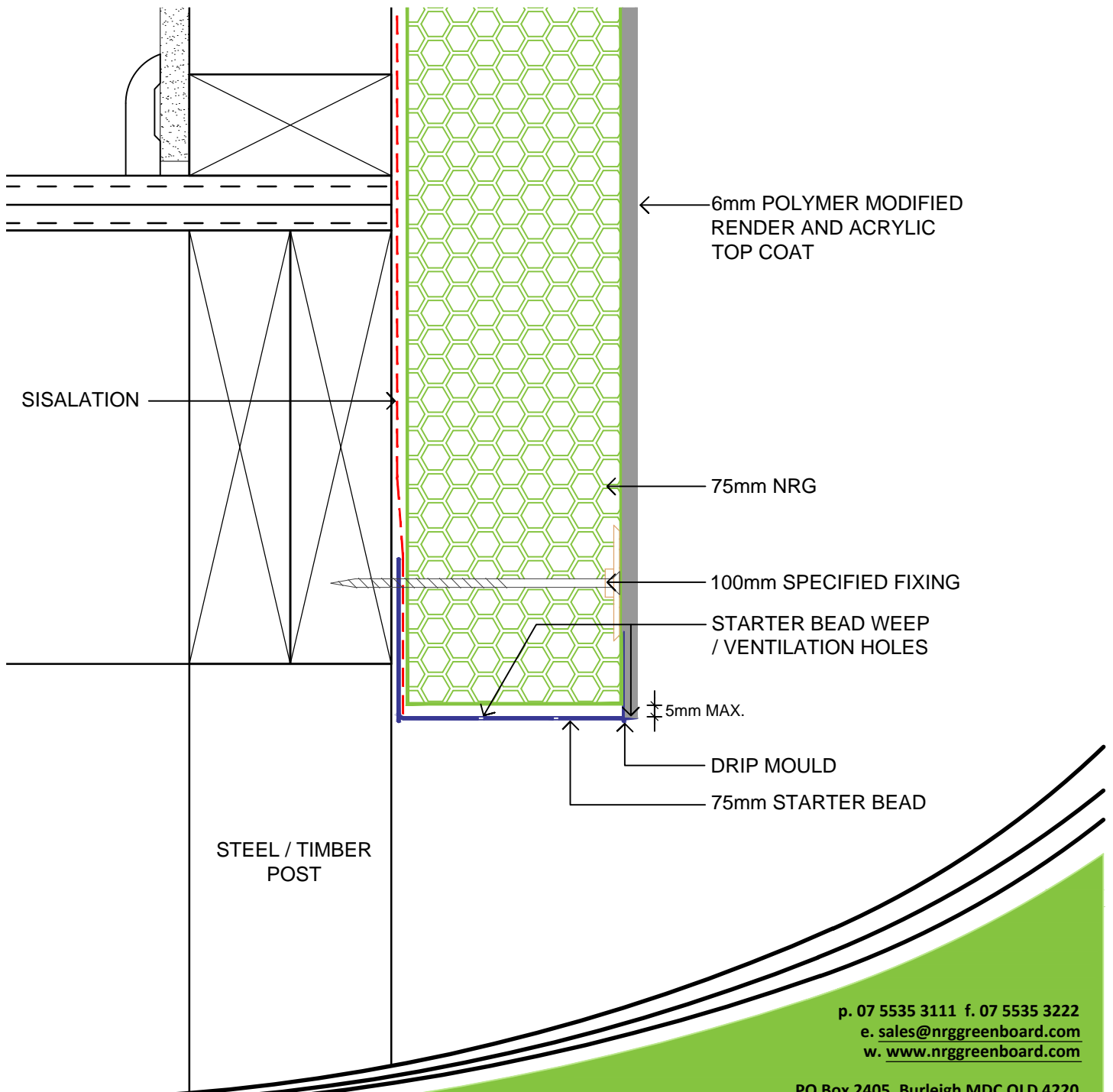
Render as per NRG specifications using NRG polymer modified bag render, fibreglass mesh followed by acrylic top coat.

STARTER  
 BEAD WEEP /  
 VENTILATION  
 HOLES

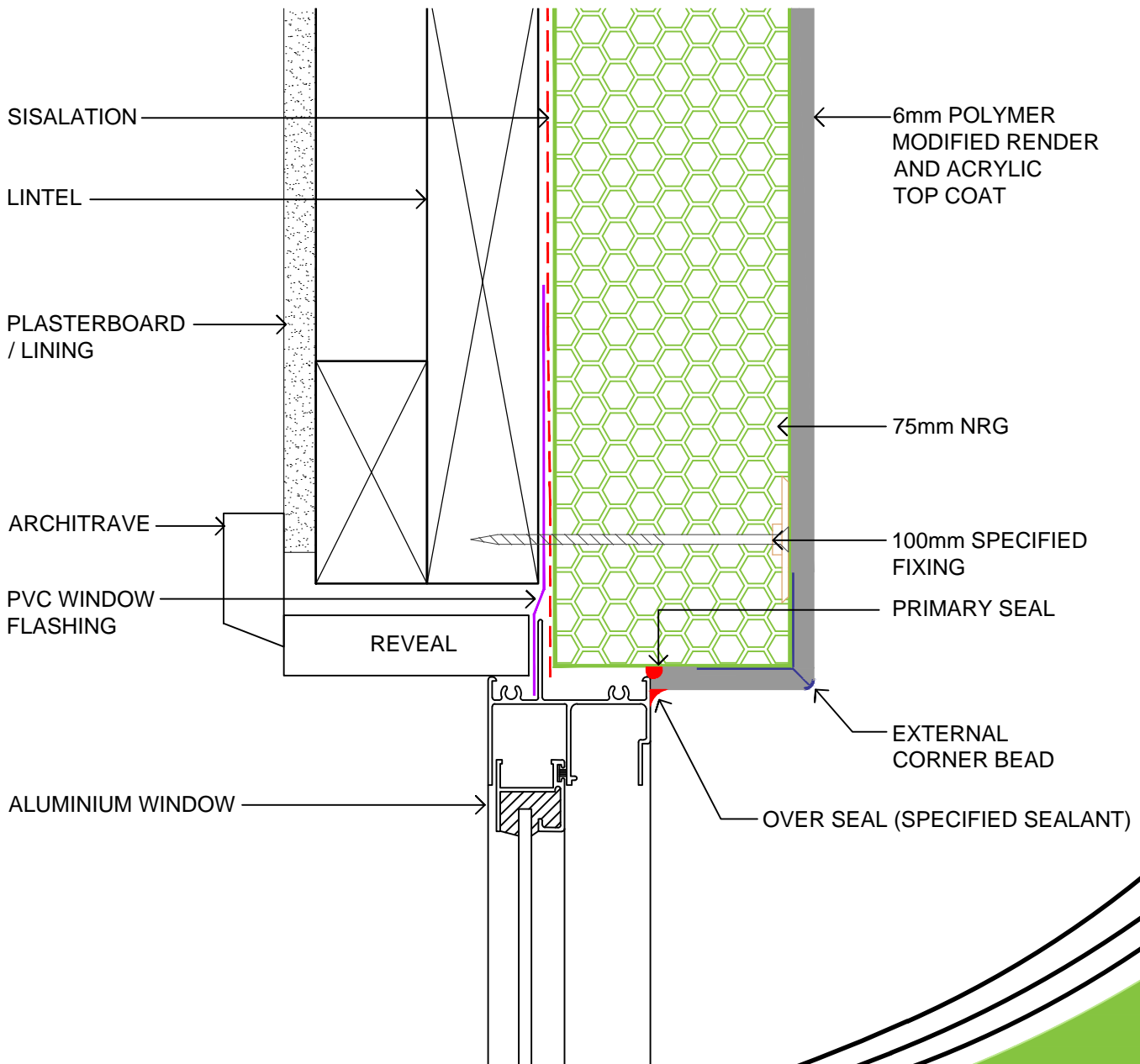
5mm MAX.  
 3mm MAX.

**NOTE :**  
 DAMP PROOF COURSE &  
 TERMITE MANAGEMENT  
 SYSTEM BY OTHERS

**NRG 75 DFF**  
**TIMBER FLOOR DETAIL**  
**DETAIL 3.0**

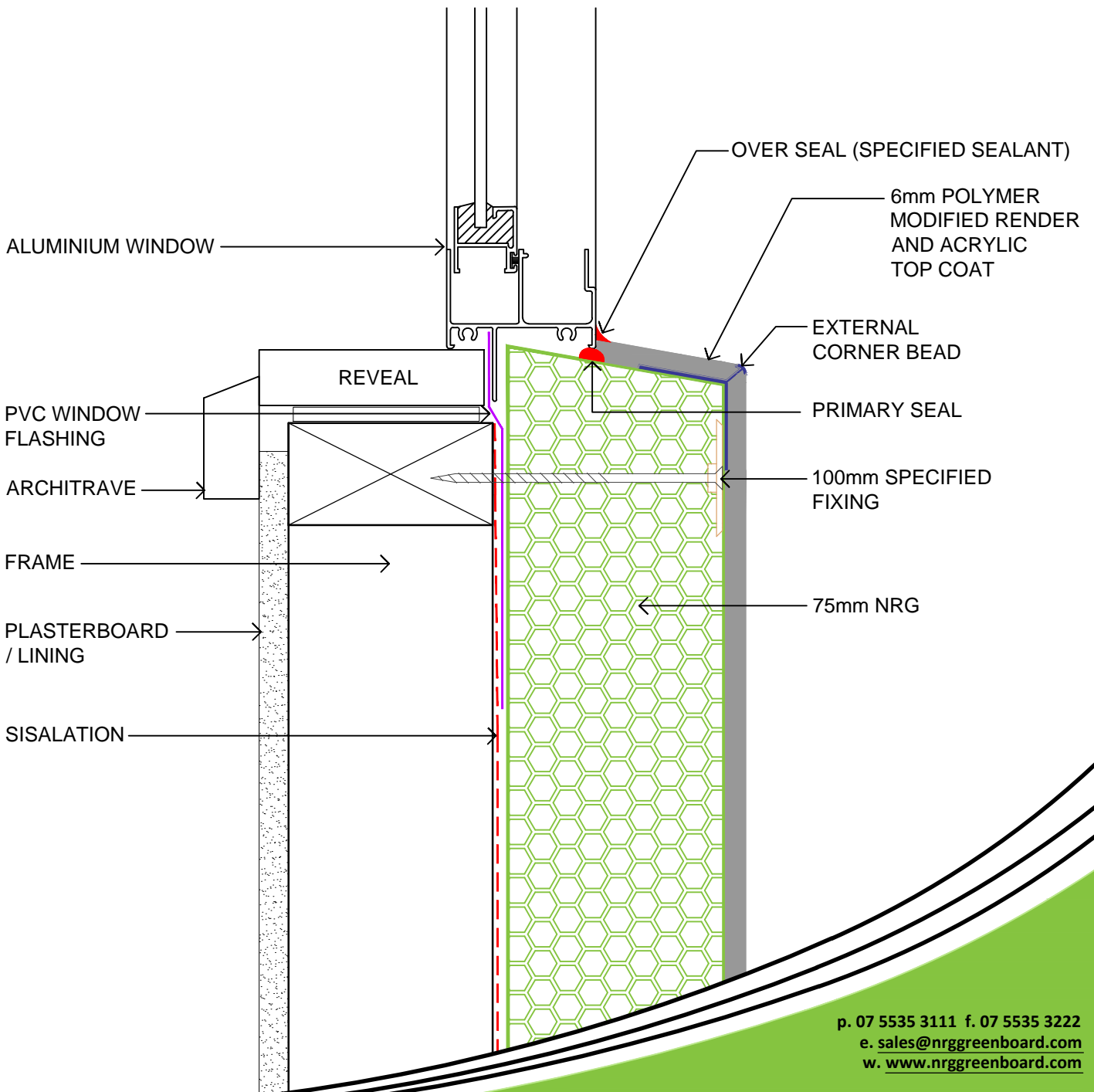


**NRG 75 DFF**  
**HEAD & JAMB DETAIL**  
**DETAIL 4.0**





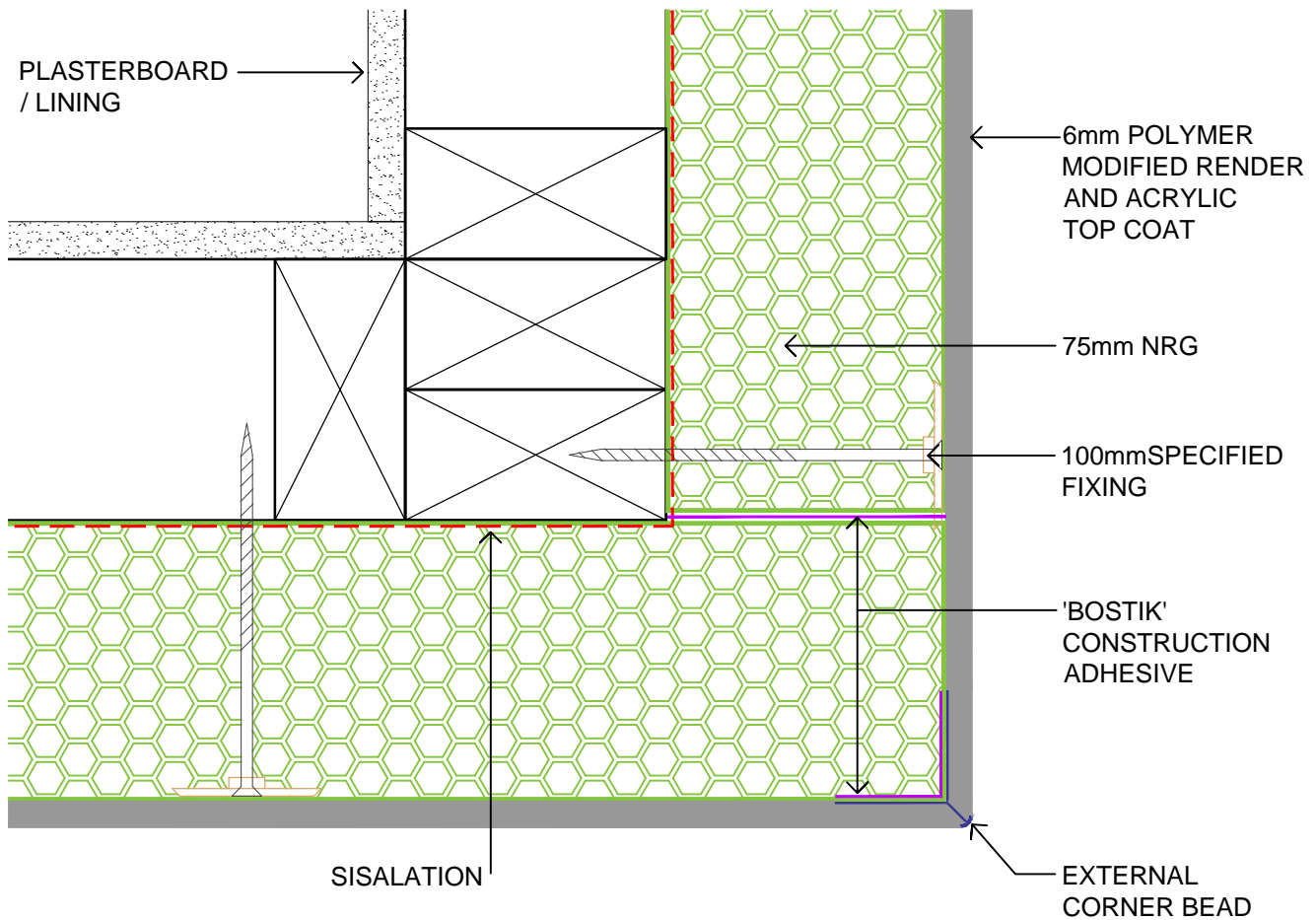
**NRG 75 DFF**  
**WINDOW SILL DETAIL**  
**DETAIL 5.0**



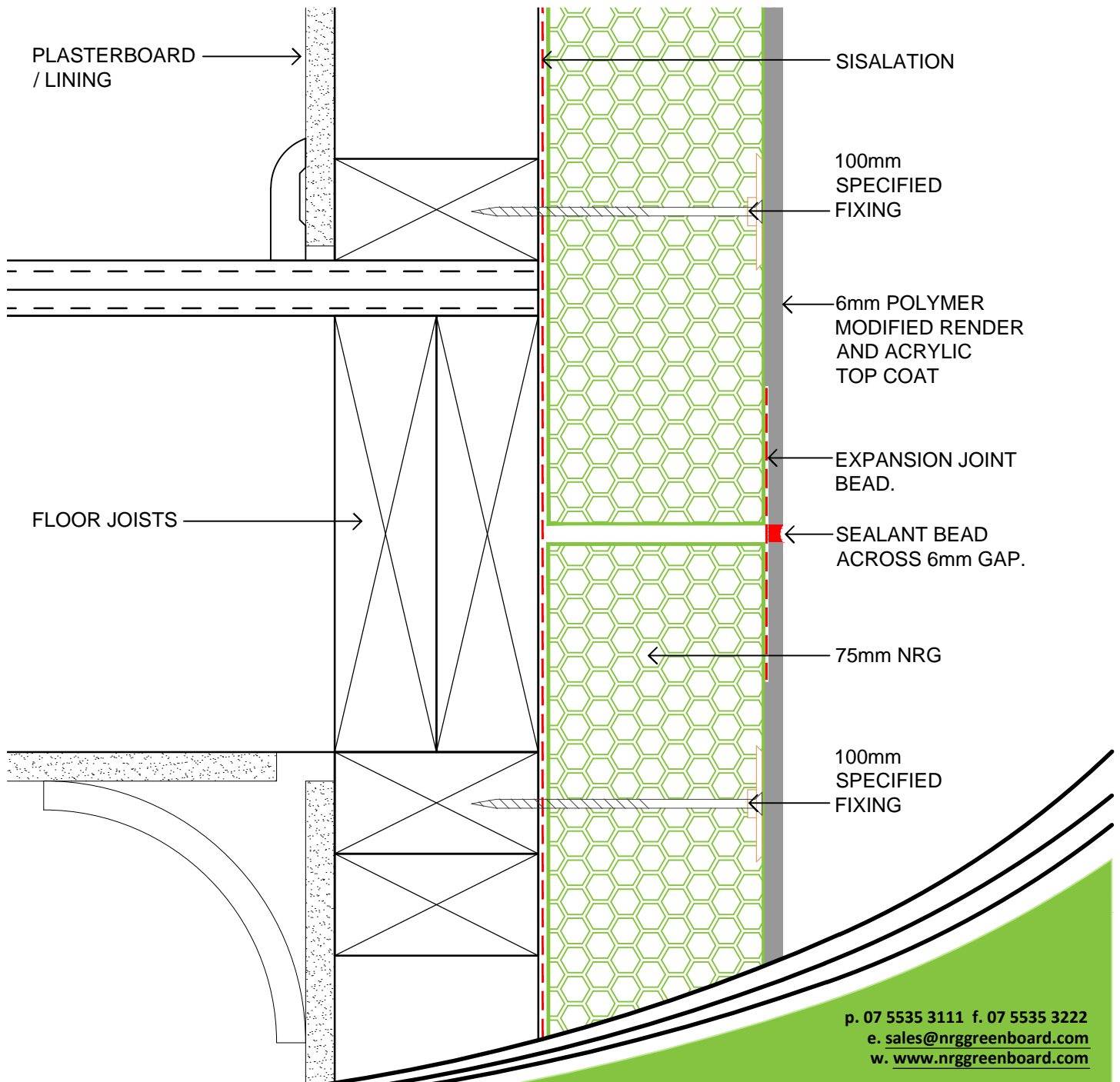
p. 07 5535 3111 f. 07 5535 3222  
 e. [sales@nrggreenboard.com](mailto:sales@nrggreenboard.com)  
 w. [www.nrggreenboard.com](http://www.nrggreenboard.com)

PO Box 2405, Burleigh MDC QLD 4220  
 Factory 4, 32-38 Dover Drive, West Burleigh QLD 4220

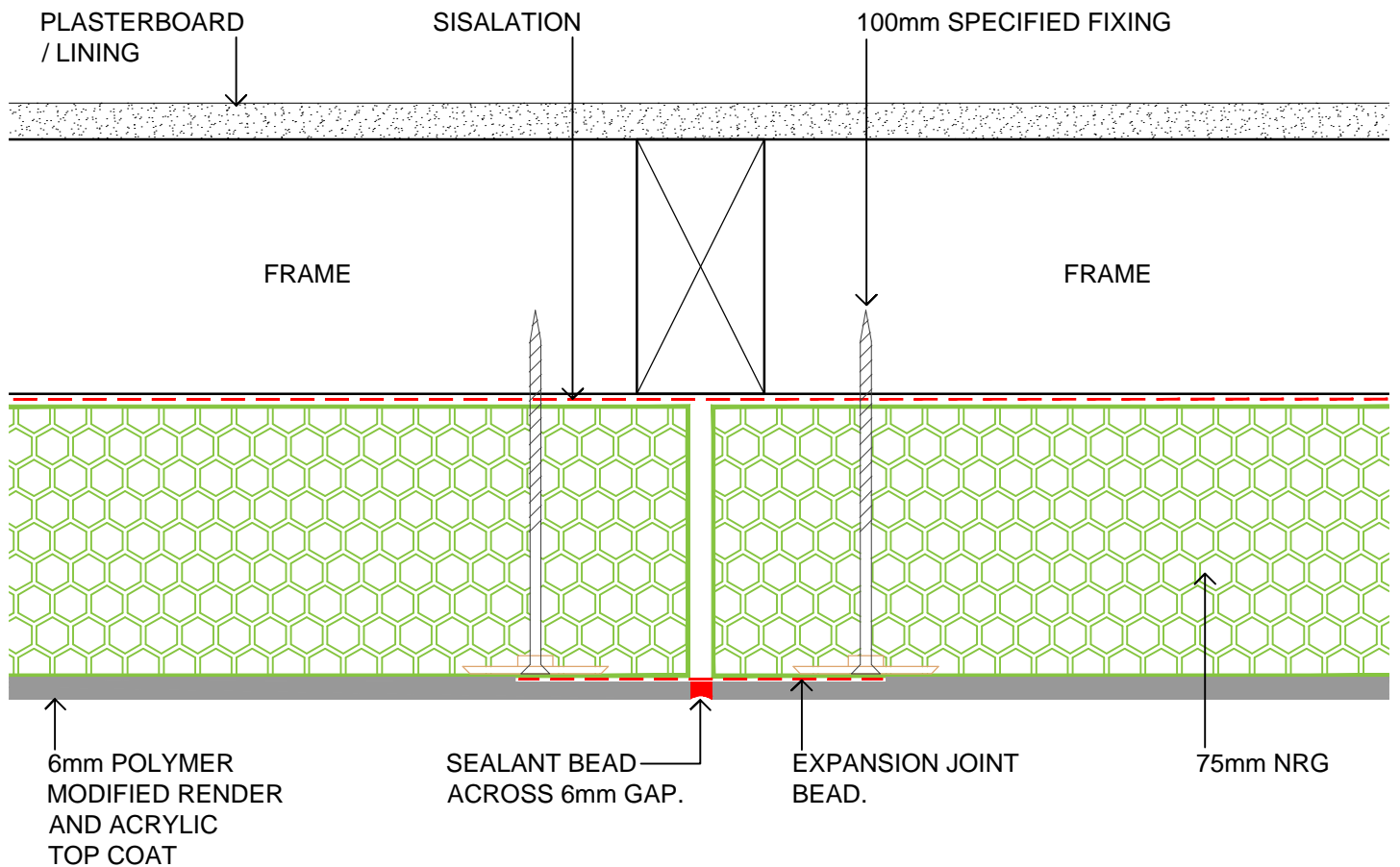
**NRG 75 DFF**  
**EXTERNAL CORNER DETAIL**  
**DETAIL 6.0**



**NRG 75 DFF**  
**HORIZONTAL EXPANSION JOINT DETAIL**  
**DETAIL 7.0**



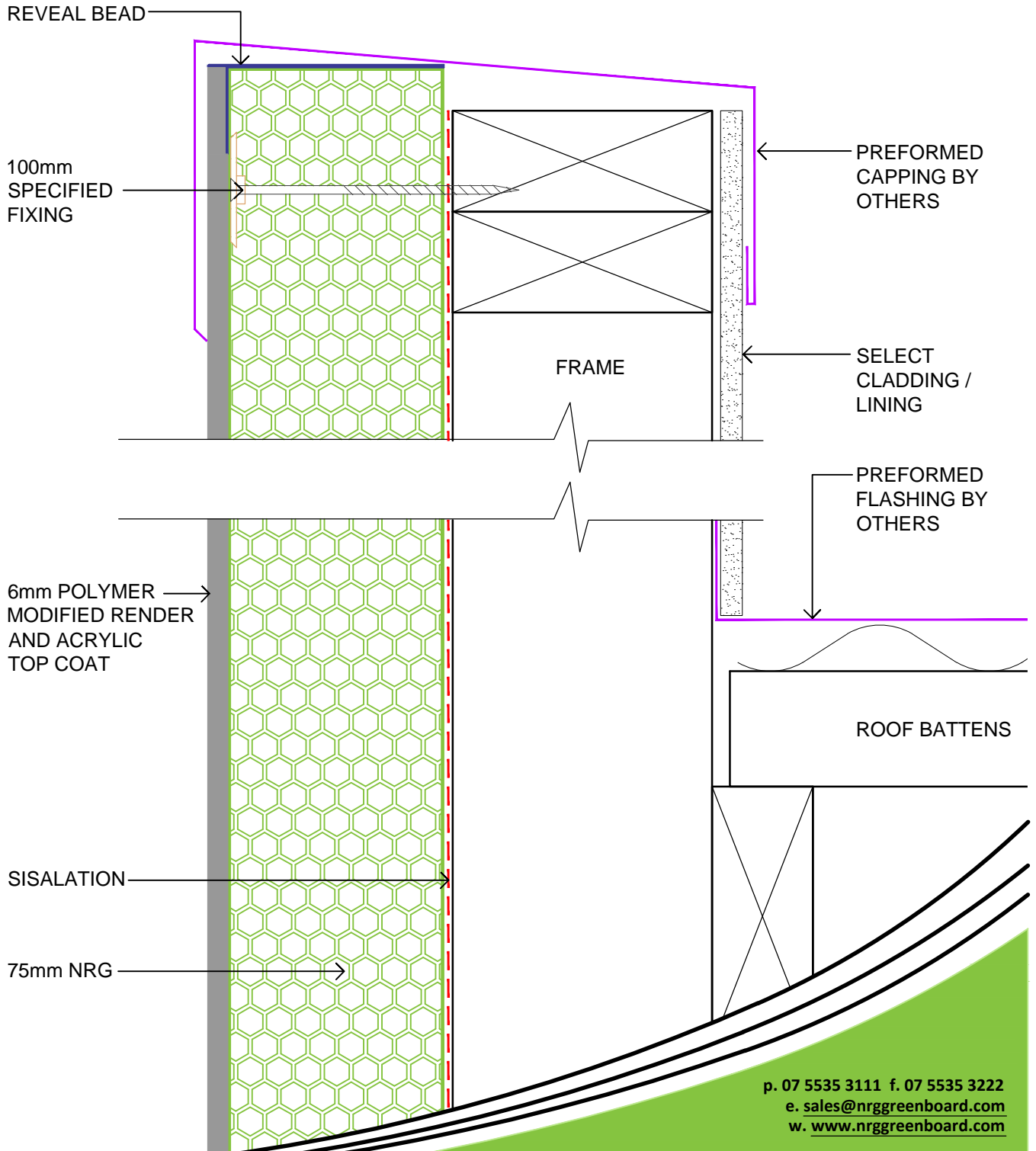
**NRG 75 DFF**  
**VERTICAL EXPANSION JOINT DETAIL**  
**DETAIL 8.0**



**OPTION 2 EXPANSION JOINT DETAIL**

- CHALK LINE AFTER RENDER / TEXTURE.
- 20mm CUT THROUGH RENDER AND INTO PANEL USING DIAMOND TIP BLADE.
- TAPE EITHER SIDE OF JOINT.
- SEAL WITH SEALANT.
- REMOVE TAPE AND PAINT.

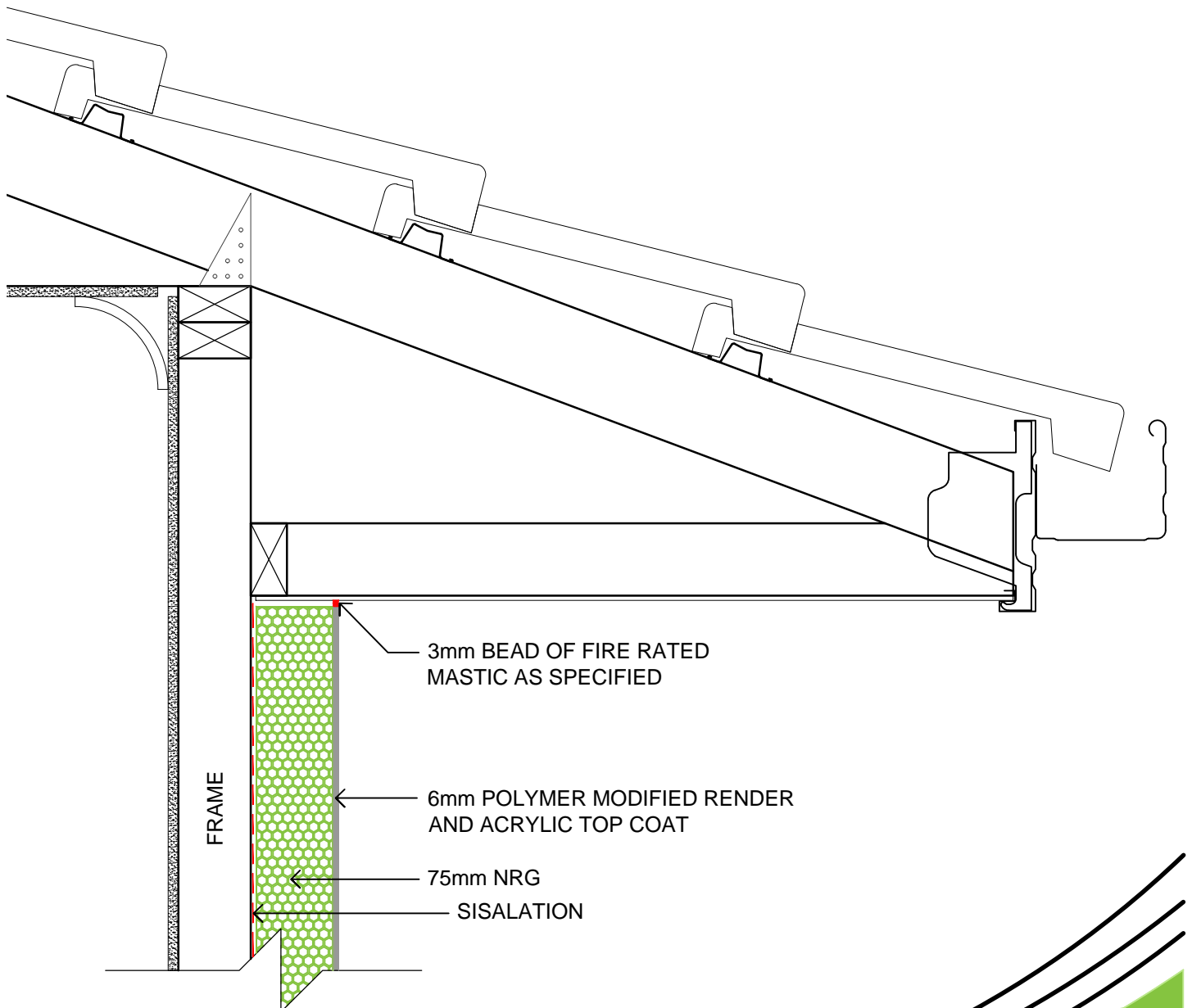
**NRG 75 DFF**  
**PARAPET WALL DETAIL**  
**DETAIL 9.0**



p. 07 5535 3111 f. 07 5535 3222  
e. [sales@nrggreenboard.com](mailto:sales@nrggreenboard.com)  
w. [www.nrggreenboard.com](http://www.nrggreenboard.com)

PO Box 2405, Burleigh MDC QLD 4220  
Factory 4, 32-38 Dover Drive, West Burleigh QLD 4220

**NRG 75 DFF**  
**SOFFIT DETAIL**  
**DETAIL 10.0**



**NRG 75 DFF**  
**NRG / MASONRY JUNCTION DETAIL**  
**DETAIL 11.0**

